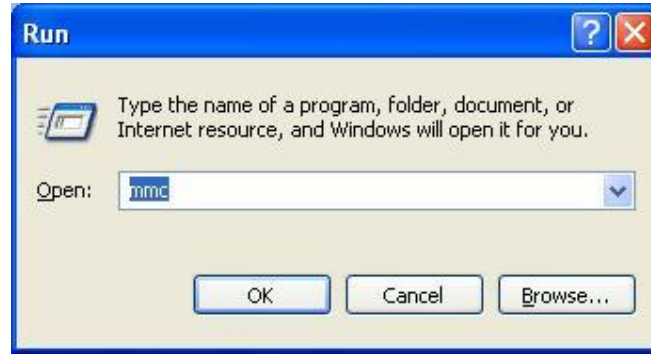
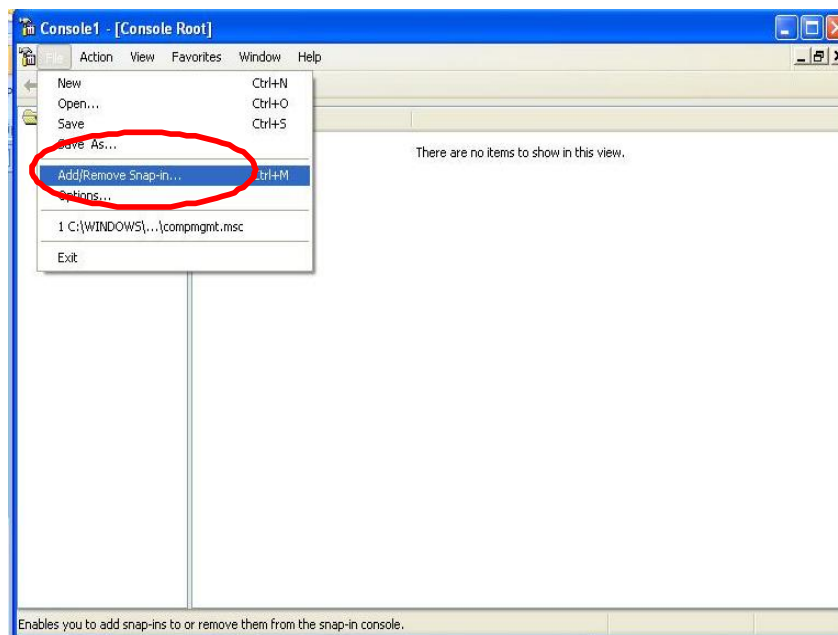


# I. Installation of Root CA Certificate in Windows XP machine

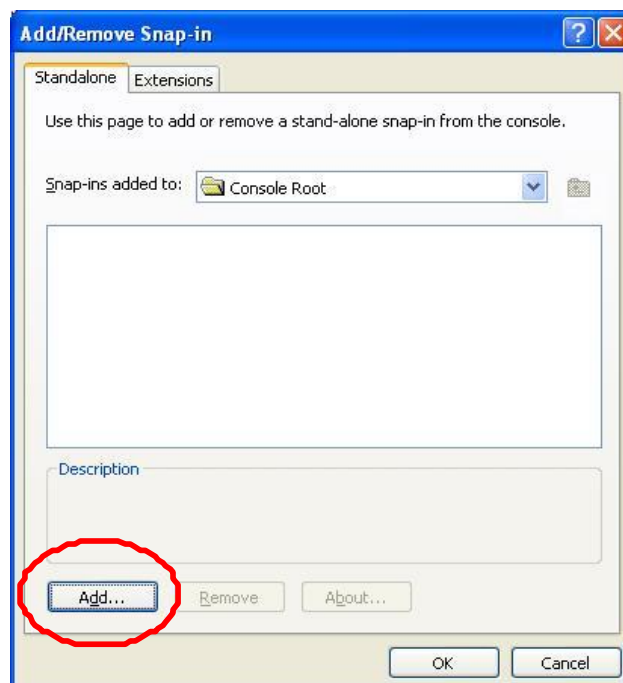
i). On the **run** type MMC



ii). Click on Add/Remove snap in



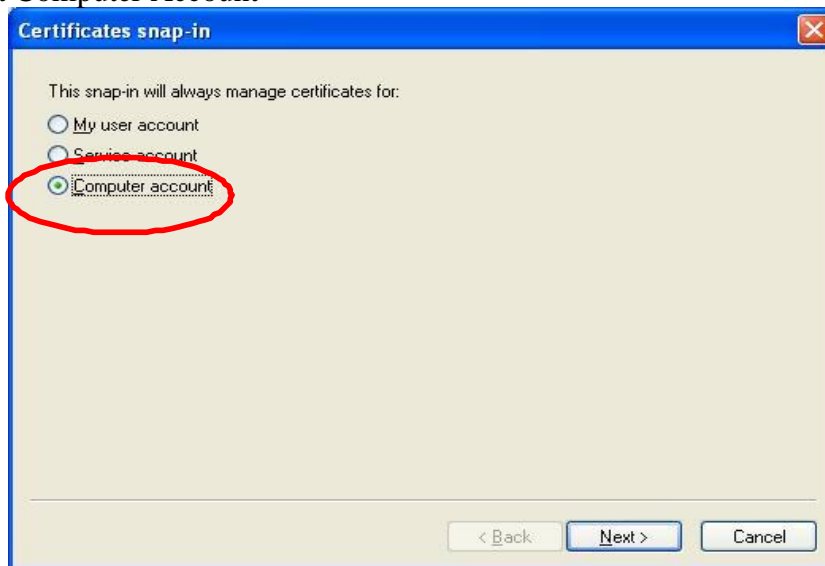
iii). Click add



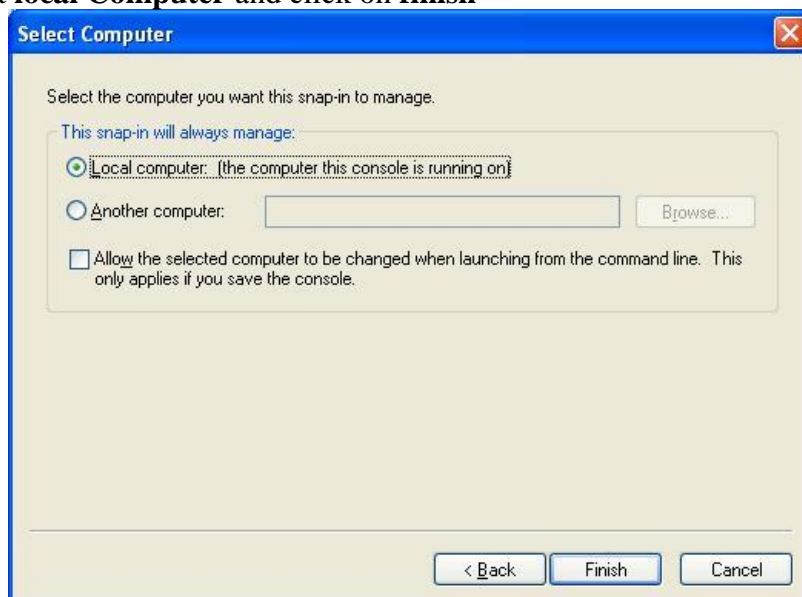
iv). Select **certificate** and Click **add**



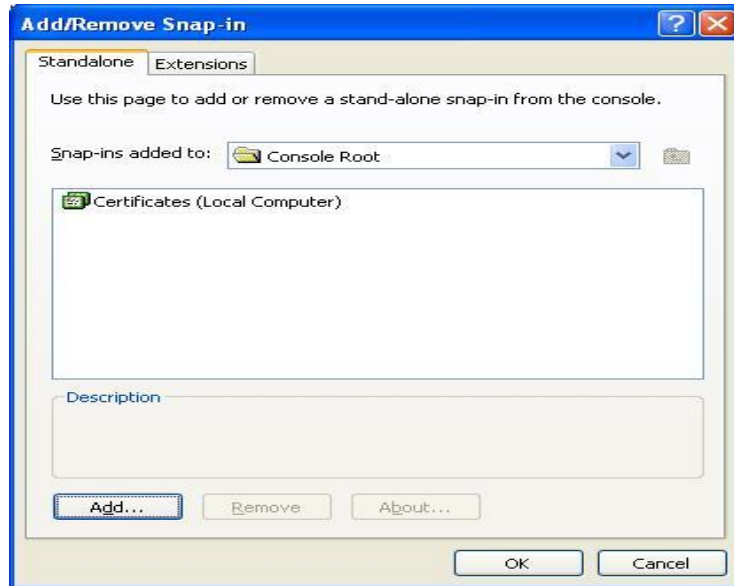
v). Select Computer Account



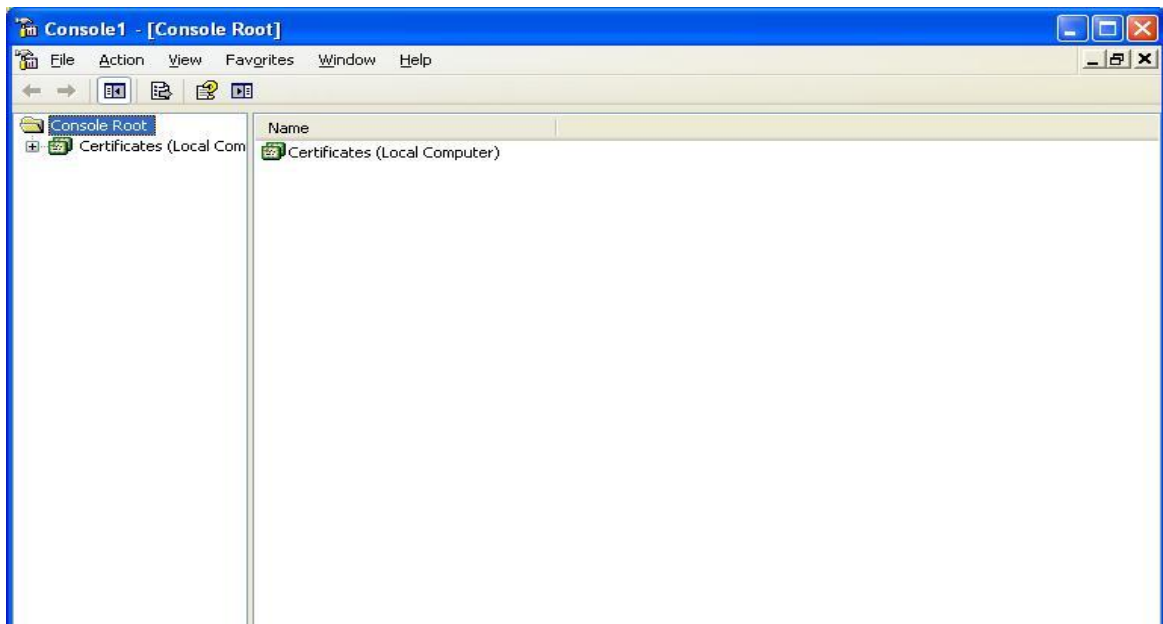
vi). Select **local Computer** and click on **finish**



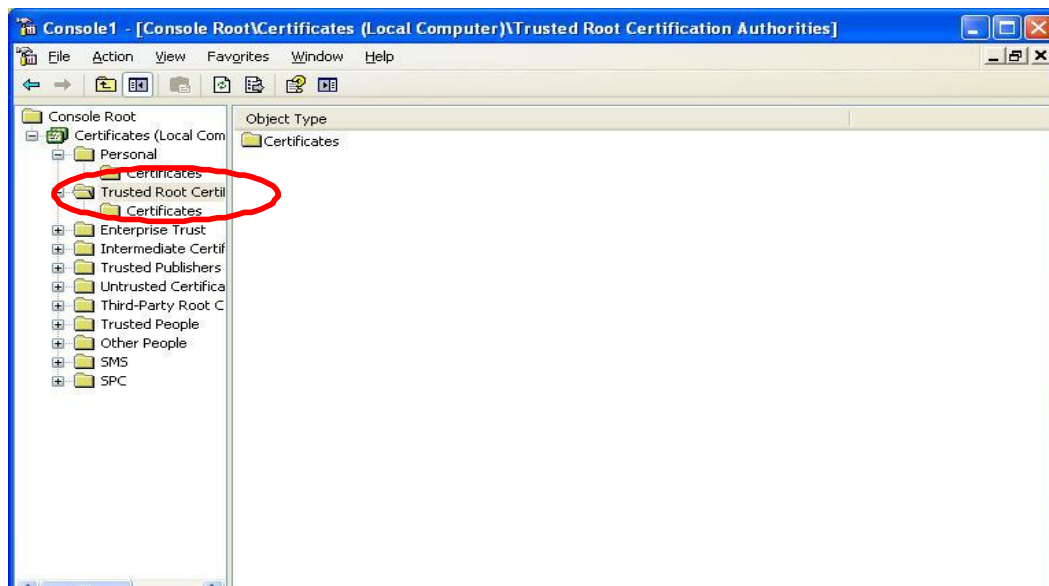
vii). Click on OK



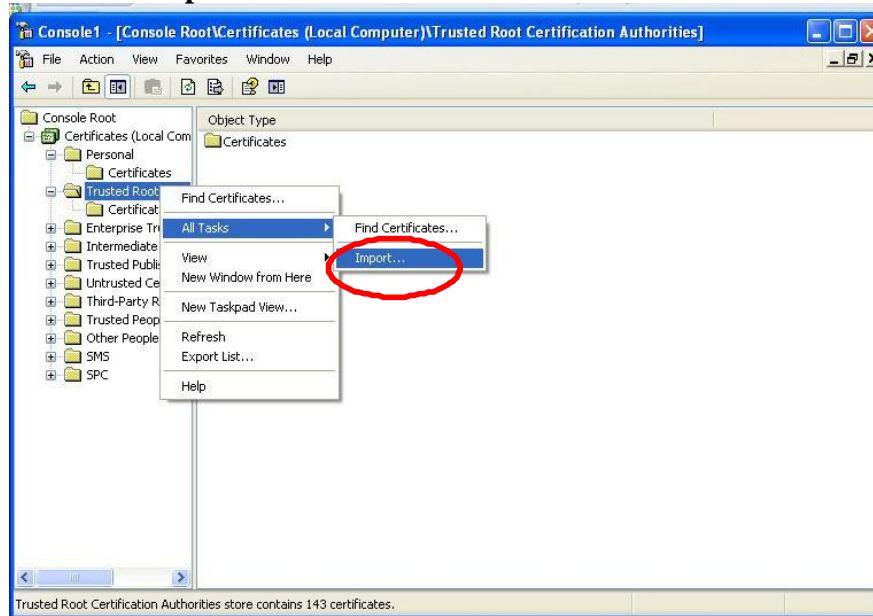
viii). Expand the Certificates



ix). Right Click on Trusted Root Certificate Authority



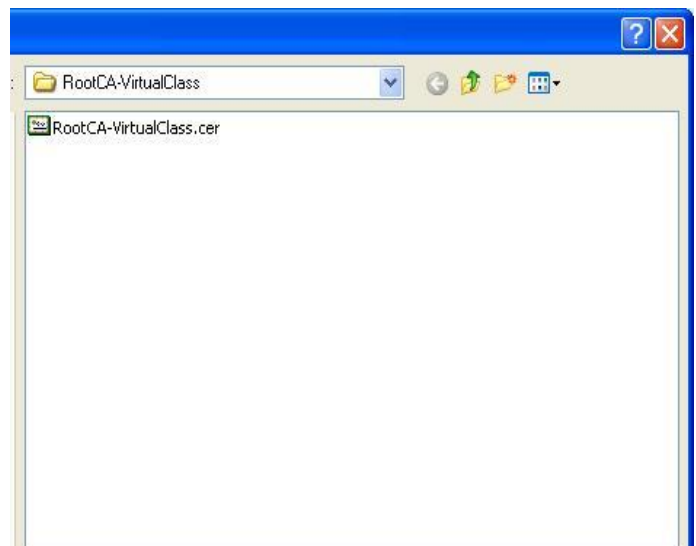
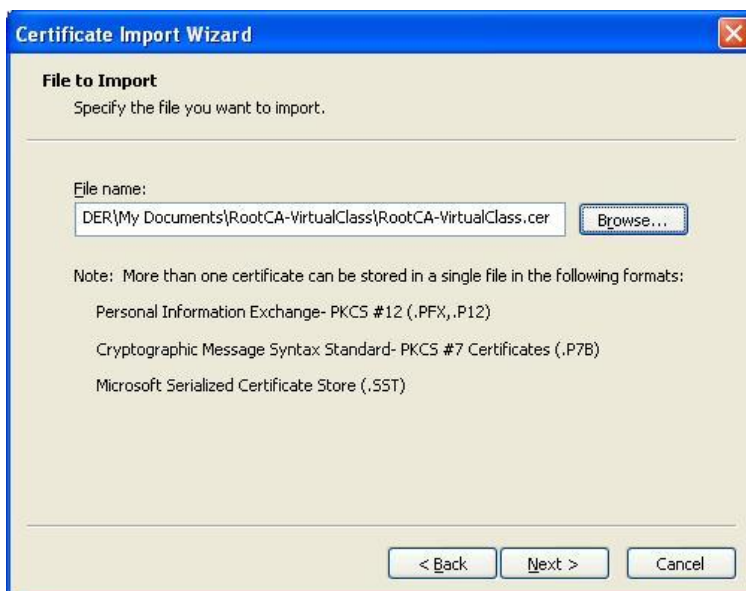
x). Click on **Import**



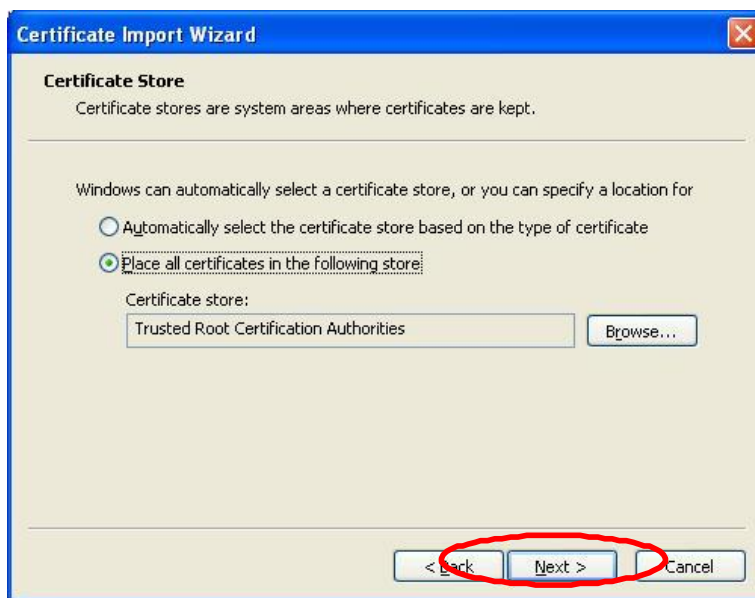
xi). Follow the wizard



xii). Click **Browse** and Select **RootCA-VirtualClass > RootCA-VirtualClass.cer**



xiii). Click **Next**



xiv). Click **yes** on the warning message and Click finish and OK

