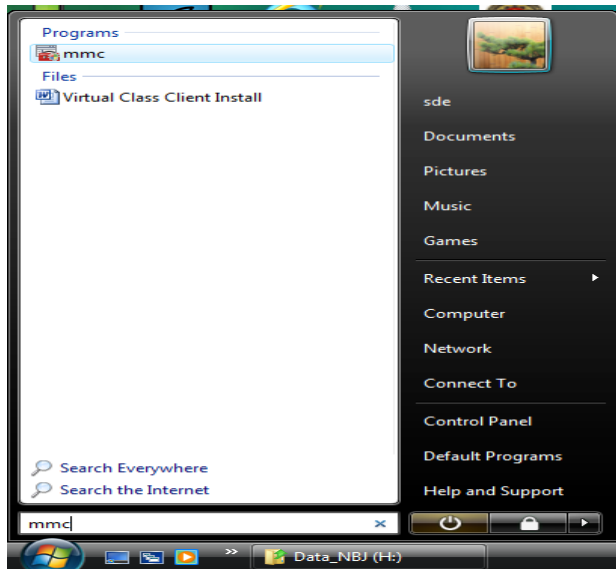


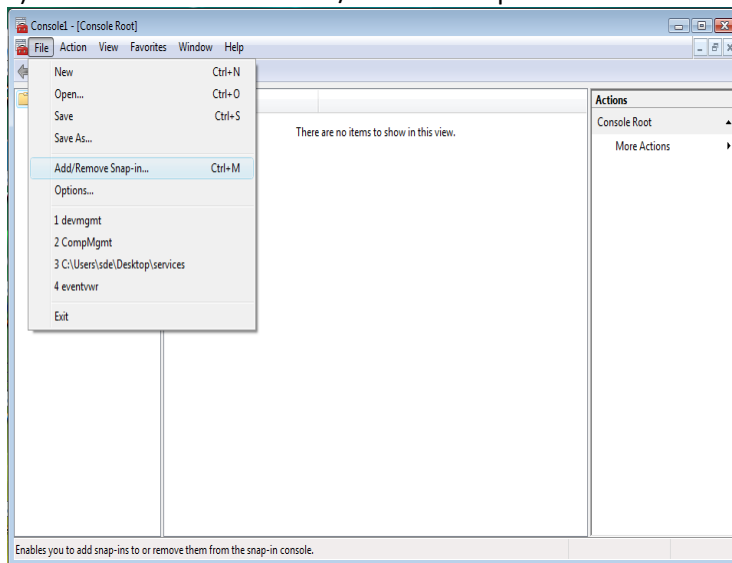
1] Procedure To install Root certificate in the Computer for Windows Vista

a) Type mmc in search above start button

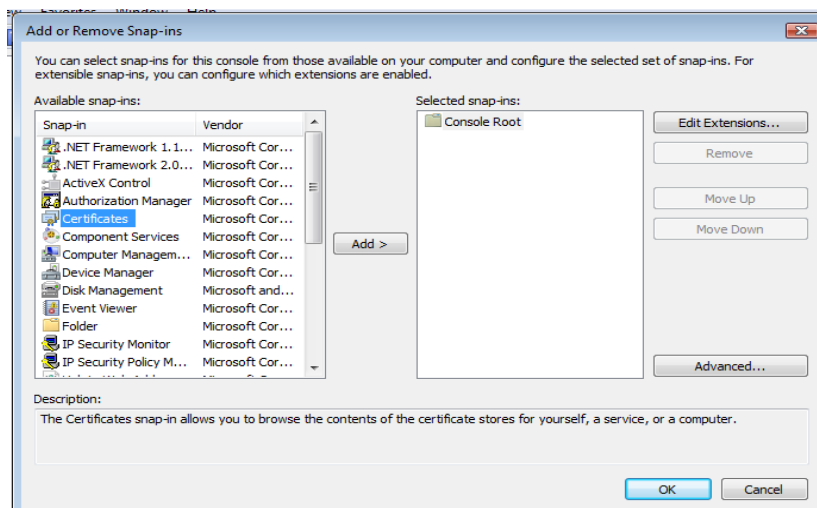


b) Click Enter button and the window below will open

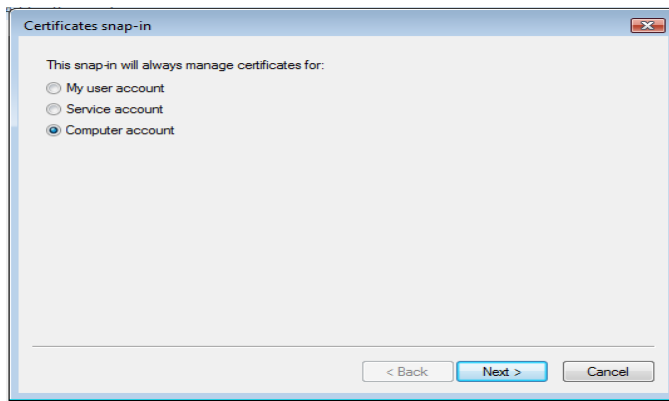
c) Click on File menu --- Add/Remove Snap-in



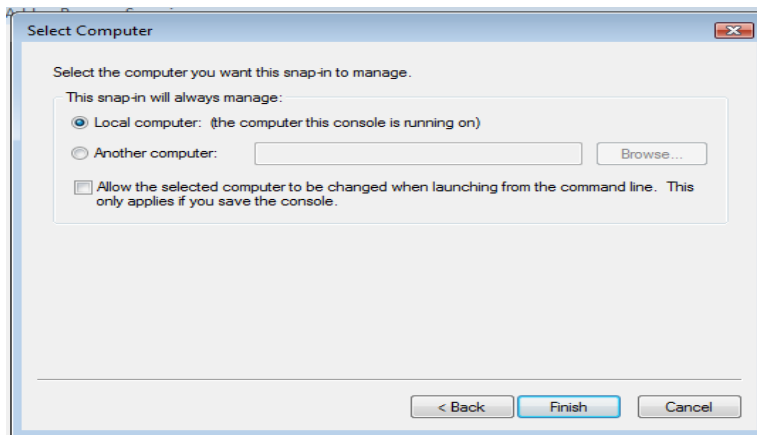
d) Select Certificates and click on Add button



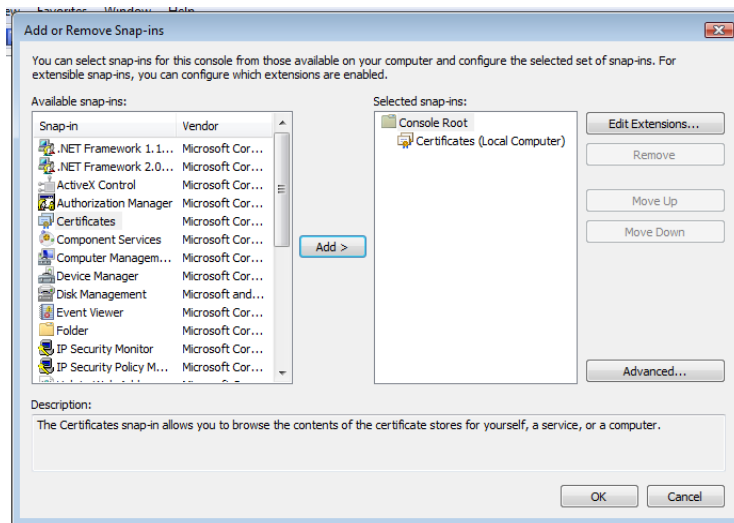
e) Select Computer Account radio button



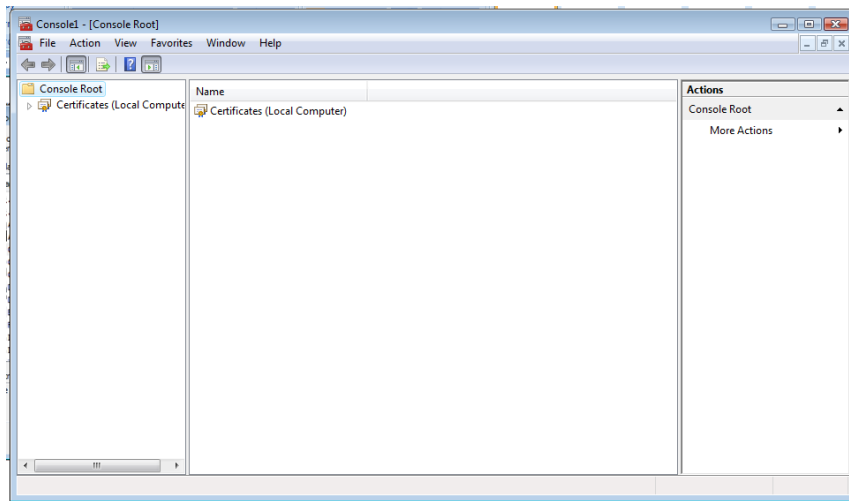
f) Click Next and Finish



g) Click OK and Select Certificates(Local Computer)



h) Click OK and Select Certificates and expand by clicking on arrow before the certificates



- i) Click on the arrow before Trusted Root Certification Authorities
- j) Select and right click the Certificates.
- k) Click on All tasks and select Import
- l) Give the path of certificate which you have downloaded from website

